

A  
R  
C  
H  
I  
T  
E  
C  
T  
U  
R  
A  
L

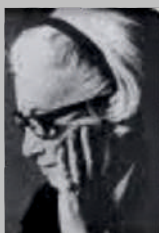
E  
L  
E  
M  
E  
N  
T  
S

**ELEMENTS** are a play of point, line, plane and volume. They come together to make a building whole.

Architects Maxwell Fry & Jane Drew experimented with elements in their works in Chandigarh from 1951 to 1954 that inspire architects even today.



Maxwell Fry



Jane Drew

## Maxwell Fry – the ‘Thinker’ imagines ...

*“I have watched summer creep through the gates at the nod of spring, and how she spreads herself, with the smile of a beneficent hostess, over everything. The banks are a glory; great waves of nodding flowers, lupins, foxgloves, sweet peas and all the lovely garden blooms glow in masses of colour – and the rose hangs over the path.”*

## Jane Drew – the ‘Doer’ believes...

*“I have to confess that the jobs I’ve done in life, I have always been involved in the cause of the job. Whether the Open University or education in Ghana or doing a city for the refugees (Chandigarh). It has always mattered to me tremendously that the object should be something very worthwhile.”*

This is a month long perpetual calendar.

These pictures were taken in June of 2019 in Chandigarh, to commemorate the work of Jane Drew & Maxwell Fry.

The captions are a playful interpretation of the architectural elements by the authors of this calendar.



1<sup>st</sup>

*Ice Cube Tray*

Housing Type 3

Sector 4



2<sup>nd</sup>

*Four in One*



3<sup>rd</sup>

*Simply Staggering*

Shop cum Flats

Sector 22



4<sup>th</sup>

*Random Rubbles*



5<sup>th</sup>

*Pure Geometrics*

Government College for Men

Sector 11



6<sup>th</sup>

*Square it Out*

Government College for Men

Sector 11



7<sup>th</sup>

*Exposed*

Government Hospital

Sector 16



8<sup>th</sup>

*The Egg Crate*

Housing Type 9

Sector 22



9<sup>th</sup>

*Dashing Along*

Housing Type 7

Sector 16



10<sup>th</sup>

*Curve in a Curve*

Kiran Theatre

Sector 22



# 11<sup>th</sup>

*Two Up and Two Down*

Housing Type 9

Sector 22



C Jeweller &

12<sup>th</sup>

*Step Ladders*

Shop cum Flats

Sector 22



# 13<sup>th</sup>

*Rows & Columns*

Housing Type 10

Sector 22



# 14<sup>th</sup>

## *Holes & Curves*

Type 12 cluster housing

Boundary wall Sector 22/23



15<sup>th</sup>

*Roll a Dice and it's a Five!*



# 16<sup>th</sup>

*One Brick Tall  
Somewhere in a Wall*

A House

Sector 23



# 17<sup>th</sup>

*Let's Play 'Dots'*

Housing Type 11

Sector 22



18<sup>th</sup>

Checkers

Housing Type 9

Sector 22



# 19<sup>th</sup>

*Dots & Dashes*

Shop cum Flats

Sector 22



# 20<sup>th</sup>

*Light & Shade*



# 21<sup>st</sup>

*The Morse Code*

Shop cum Flats

Sector 22



22<sup>nd</sup>

*Squares & a Red Brick Wall*

Cluster Housing Type 13

Sector 22

NOT ALLOWED TO BRING/USE  
PHONE IN SCHOOL CAMPUS +  
PENALTY TAKEN AGAINST THE DEFAULTERS.



23<sup>rd</sup>

*The Zig - Zags*



621

# 24<sup>th</sup>

*Arch am I ! Not so High*

Cluster Housing Type 13

Sector 22



25<sup>th</sup>

*It's a Composition!*



26<sup>th</sup>

*Airplane Screen - Set in Green*



# 27<sup>th</sup>

*Glass Glass on the Wall*

Government Printing Press

Sector 18



# 28<sup>th</sup>

## *Splitting the Squares*

Housing Type 3

Sector 4



29<sup>th</sup>

*A Room with Many Views*

Housing Type 3

Sector 4



# 30<sup>th</sup>

## *Pigeon Holes*

Housing Type 3

Sector 4



31<sup>st</sup>

*Of Brick, Glass & Stone*

Government Printing Press

Sector 18

This calendar was published in September, 2019 on the occasion of RIBA President's Medals Exhibition held at Chandigarh College of Architecture. It is an alumni - student collaboration.

All rights reserved.

No part of this publication including photographs and captions may be reproduced, stored in a retrievable system or transmitted in any form or by any means, electronic, mechanical, photocopying, recording or otherwise without the prior permission of the copyright owners.

All published content remains the intellectual property of CCA and the following copyright owners:

Jeevan Jyot - Student, CCA

Sonali Aggarwal - Visiting Faculty, CCA

Anjali Sagar - Visiting Faculty, CCA

## CONCEPT

*Sonali Aggarwal*

## PHOTO CREDITS

*Jeevan Jyot & Sonali Aggarwal*

## COMPILATION & EDITING

*Sonali Aggarwal & Anjali Sagar*

## MENTOR

*Anjali Sagar*



Chandigarh College of Architecture



ARCHITECTURAL

# ELEMENTS

*Of Jane Drew & Maxwell Fry*

A  
R  
C  
H  
I  
T  
E  
C  
T  
U  
R  
A  
L

E  
L  
E  
M  
E  
N  
T  
S

**ELEMENTS** are a play of point, line, plane and volume. They come together to make a building whole.

Architects Maxwell Fry & Jane Drew experimented with elements in their works in Chandigarh from 1951 to 1954 that inspire architects even today.